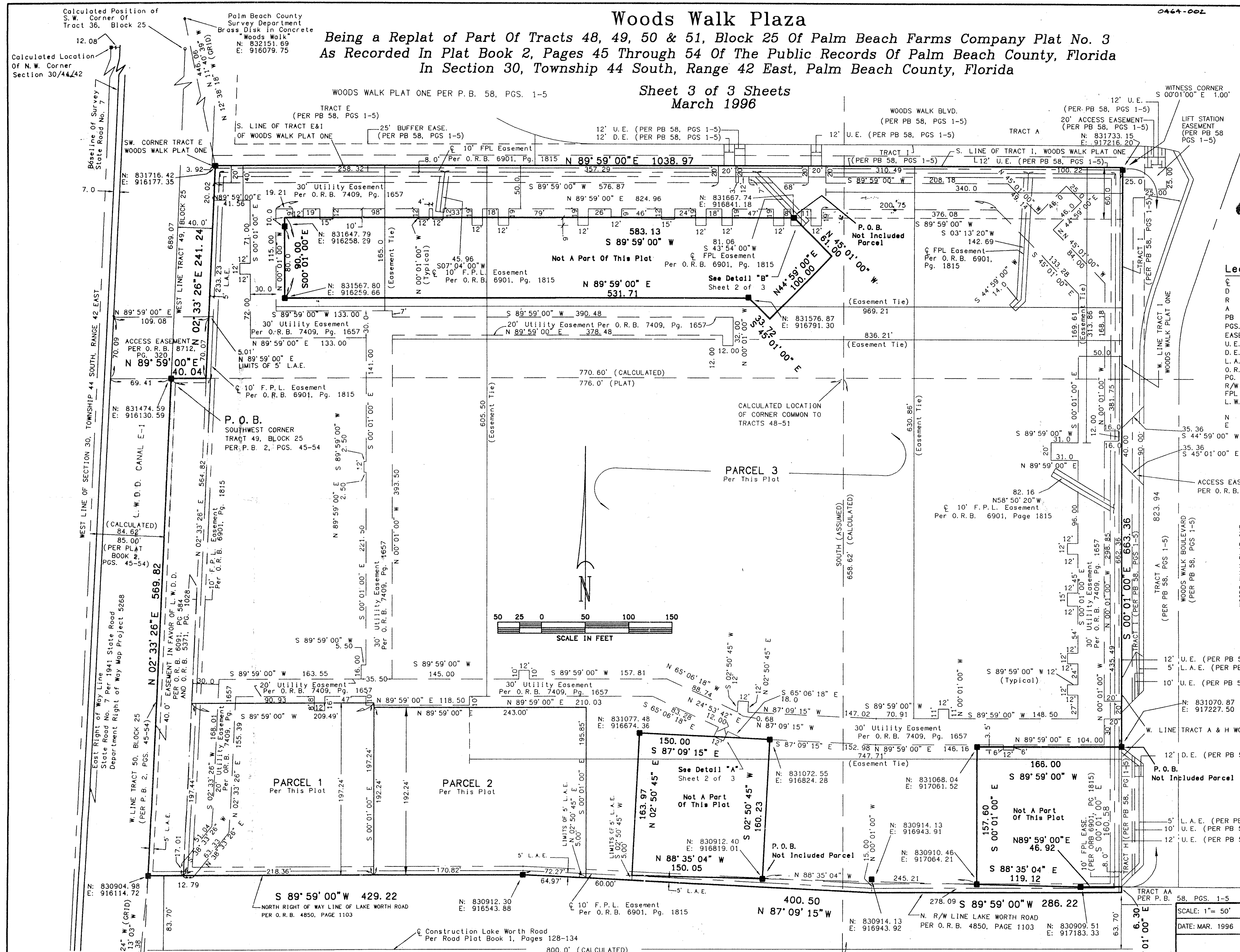


Woods Walk Plaza
Being a Replat of Part Of Tracts 48, 49, 50 & 51, Block 25 Of Palm Beach Farms Company Plat No. 3
As Recorded In Plat Book 2, Pages 45 Through 54 Of The Public Records Of Palm Beach County, Florida
In Section 30, Township 44 South, Range 42 East, Palm Beach County, Florida

Sheet 3 of 3 Sheets
March 1996

0464-002

787.85-69
5/2/12



- Legend**
- (C) = CENTERLINE
 - (D) = DELTA (CENTRAL ANGLE)
 - (R) = RADIUS
 - (A) = ARC LENGTH
 - (PB) = PLAT BOOK
 - (PGS.) = PAGES
 - (EASE.) = EASEMENT
 - (U.E.) = UTILITY EASEMENT
 - (D.E.) = DRAINAGE EASEMENT
 - (L.A.E.) = LIMITED ACCESS EASEMENT
 - (O.R.B.) = OFFICIAL RECORD BOOK
 - (PG.) = PAGE
 - (R/W) = RIGHT OF WAY
 - (FPL) = FLORIDA POWER AND LIGHT COMPANY
 - (L.W.D.D.) = LAKE WORTH DRAINAGE DISTRICT
 - (N) = GRID NORTHING
 - (E) = GRID EASTING

SUBDIVISION: WOODS WALK PLAZA
BOOK 79 PAGE 12
WOOD MAP # 170A
ZONING RE 33467
GRID # 48
SE 87-4
PUD NAME WOODS WALK PLAZA

79/12

NICK MILLER, INC.
Surveying
Planning & Development
Consultants
SCALE: 1" = 50'
DATE: MAR. 1996
DRAWN BY:
CHK:

WOODS WALK PLAZA
2560 RCA Blvd., Suite 105
Palm Beach Gardens, Florida 33410
(561) 627-5200
D.B.P.R. Business License No. 4318
DRAWING NUMBER
89046X

0464-002

UNPLATTED

Palm Beach County
Survey Department
Brass Disk in Concrete
Wycliffe
N: 829426.66
E: 916004.69